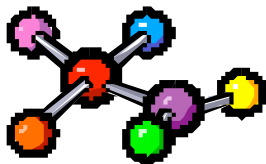


Science 10 IB - Course Outline



Course Outline:

Science 10 IB consists of four units of study:

Unit A: Energy and matter in Chemical Change (Chemistry)

Unit B: Energy Flow in Technological Systems (Physics)

Unit C: Cycling Matter in Living Systems (Biology)

Unit D: Energy Flow in Global Systems

Course Evaluation:

Assignments, Labs, Quizzes	25%
Unit Exams	45%
Final Exam	30%

Textbook: *Science 10 Addison Wesley*

Materials

binder: there are a lot a hand-outs
colored pencil crayons
graph paper
ruler
calculator

Lab Policies:

1. This science course involves labs and the use of fragile equipment. Should the student break a piece of equipment, he/she will be required to pay for its replacement.
2. Students must wear proper lab attire for specified labs; those who do not comply will be awarded a mark of zero for that lab. If a student loses lab equipment he/she must purchase another safety equipment set.

I hope you have a great semester!